



Writers House

**Anti-Displacement and Creative Placemaking
in West Philadelphia**

WRITERS ROOM



"TRIPOD has helped me see the community around me as more than a collection of streets and buildings, but as a place with its own beautiful and complex story. It has made me crave the story in everything."

DEVIN WELSH
Drexel BA English '20



"As an adult, you get to make decisions... predicated on your emotions, sparked by a taste, and the memory of how good something was, which creates a craving to try and recreate that feeling in time. Or simply by the aroma that permeates the air."



ROSALYN CLIETT
Writer-in-residence



"I could never describe what this group means to me. I don't think there are enough words. There are a few lessons I've learned, though, that I'll carry with me wherever I end up going."

NATASHA HAJO

ArtistYear Fellow at Paul Robeson High School

Drexel BA English '19



"We meet people and we have a mental picture of who they are but one day you see them through a different lens and realize that they see you as a person. And the picture in your heart changes. You see them as chosen family."



BRENDA BAILEY
Writer-in-residence



"It was never mine alone, but a Room for me to be a true part of, more so than a temporary inhabitant. What I gained was the opportunity to see, and practice seeing, myself and others. Awareness."

KYLE HOWEY

Alumni Fellow at Writers Room

Drexel BA English '19



Year 5: HOME Symposium, October 2018

WRITERS ROOM

We start with story.



Launch Day at the Dornsife Center for Neighborhood Partnerships, July 2014





Jordan McCullough at our first Anthology celebration, June 2015





First Tuesday workshop, May 2019





Carol McCullough + Cheryl Wall at our NEA kickoff concert, September 2016





21ST CENTURY ROWHOUSE

There are four main design explorations with this proposal of a city owned vacant lot at 1304 N 29th Street in Brewerytown, Philadelphia.

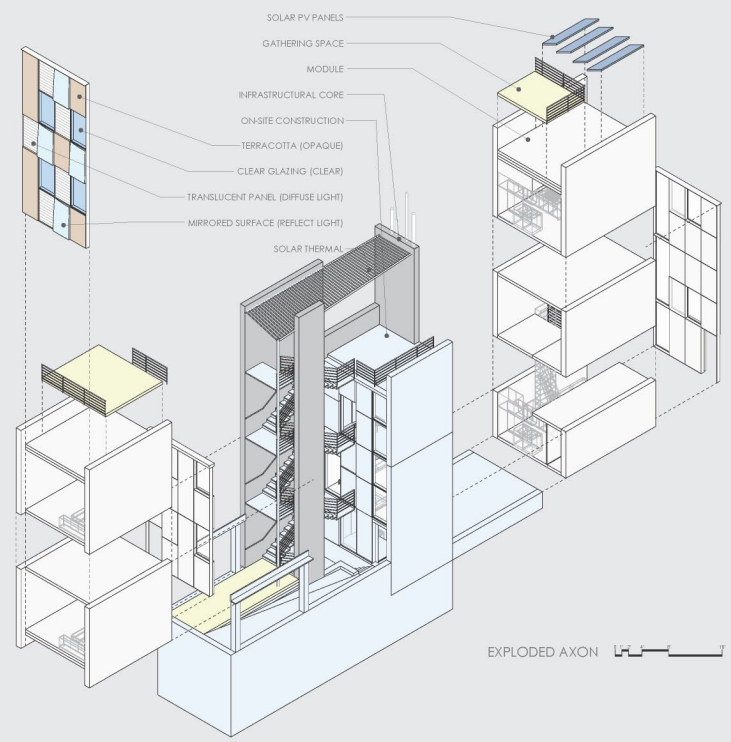
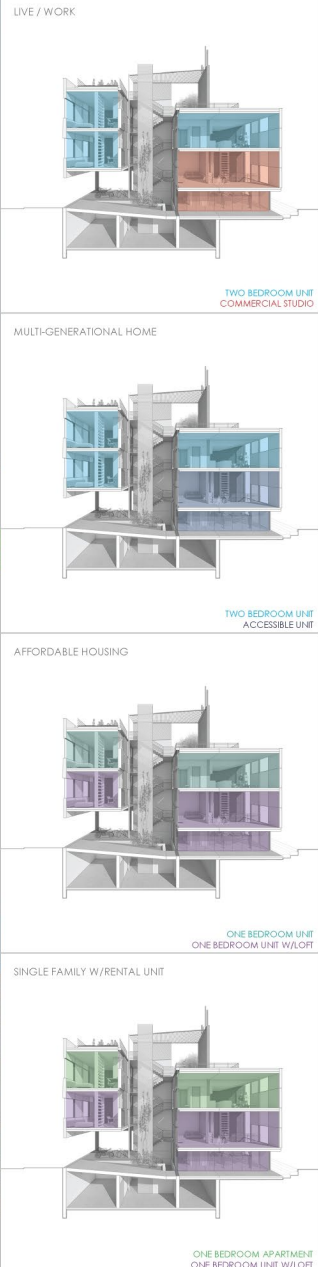
- Flexibility in property ownership & living configuration
- Access and distribution of open spaces
- Modular construction around on-site constructed infrastructural circulation core
- Expanding the functions of walls & roof systems for collection of stormwater and energy

With the changing dynamics of home ownership and entrepreneurship, this proposal aims to define a flexible architecture to be able to respond to the change in the owners' needs and allow for more diverse ownership. To aid in this goal, the units are designed to be smaller than a traditional rowhouse, and the three main outdoor gathering spaces are more easily accessible.

Modular construction and panelization of the envelope is intended to allow flexibility during the design and construction phase, and intended to lower cost and speed up construction in the long run. It also allows for more variety even in the case of the design being repeated. Instead of focusing on what the materials are, the focus in this proposal is on the functionality of the walls and roofs to be able to do more with light, energy & water.



STREET ELEVATION





VISUAL SAMPLES

ARTPLACE 2017 - SUBMISSION # R-2017-20419



DREXEL UNIVERSITY
College of
Arts and Sciences



DREXEL UNIVERSITY
Dornsife Center
for Neighborhood Partnerships

WRITERS ROOM

Graphic design by Patty West, PLA



Tripod writers-in-residence Norman Cain, Natasha Hajo, Mark Dawkins, March 2018





HOME 1: Neighborhood Histories Roundtable, October 2018







HOME 2: Healthy Living Forum, January 2019

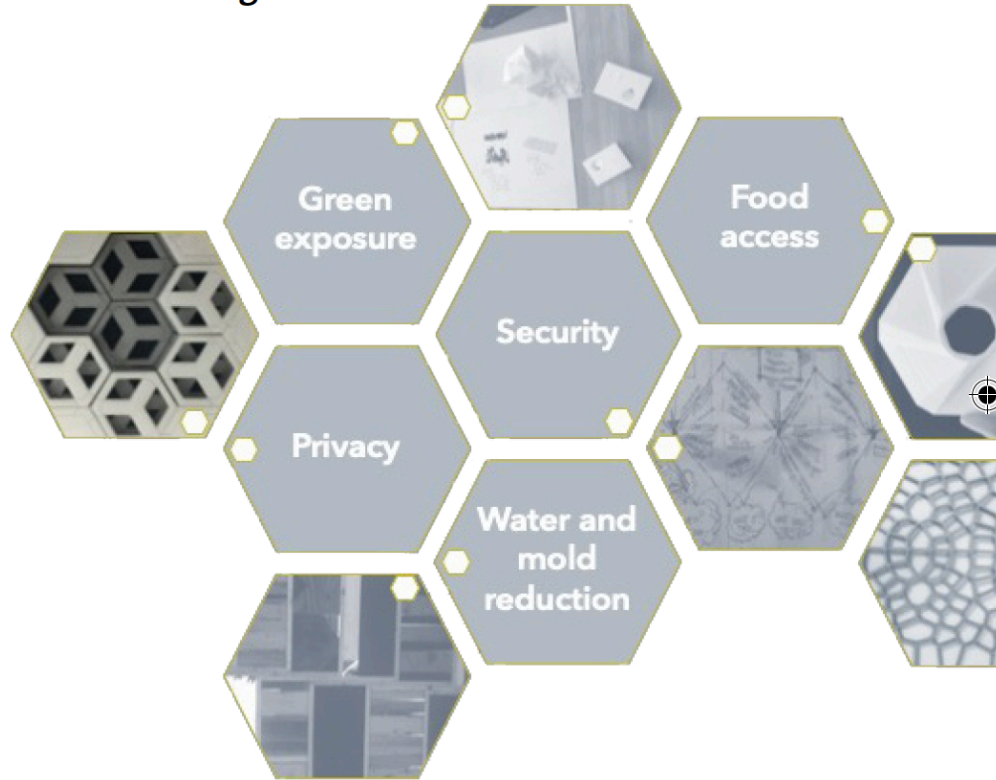


Throughout my life I have been considering home in various ways, and as we all know, it defines so much about who we are! The road map for today is a quick intro to the work of our group followed by a storyboarding exercise, four flash talks and then a creative writing exercise. I'd like to start by sharing with you the five main principles of healthy urban living our group has developed.

In order to understand the stress-oriented perspective of the proposed work, we must examine well-being in the urban environment and how it relates to food production, green space, privacy, security and self efficacy. The Integral Living Research Group has developed these principles through a fifteen-year expedition in community and collaborative design practice that built on a concurrent fifteen years of urban built environment experience including housing and residential design expertise. We have partnered across many boundaries to work with multiple service and care providers to the populations suffering from stress due to a lack of housing or due to insufficient housing. In order to understand the perspective of the proposed work, we must examine well-being in the urban environment and how it relates to green space, stress and natural exposure.

The well known and seminal study by Roger Ulrich's of hospital care and nature exposure in 1984, long ago added a focus to those who work in the built environment

Principles of Healthy Urban Living





HOME 2: Healthy Living Forum, January 2019





HOME 3: Cooperative Living Design Workshop, April 2019





HOME 3: Cooperative Living Design Workshop, April 2019





HOME 3: Cooperative Living Design Workshop, April 2019



CONTINUUMS

On the paper, as a group, create continuums of private to public activities (sleeping, studying, shopping, etc.)

Ask yourselves and talk about if any fit in several places at once, or in public or private, or between? (Writing and eating spring to mind)

Create lines and patterns with words to show these continuums.

Be creative in how you interpret the structures you have made and arranged.

COMMUNITY
SLIDING DOOR

COOP AGREEMENT!

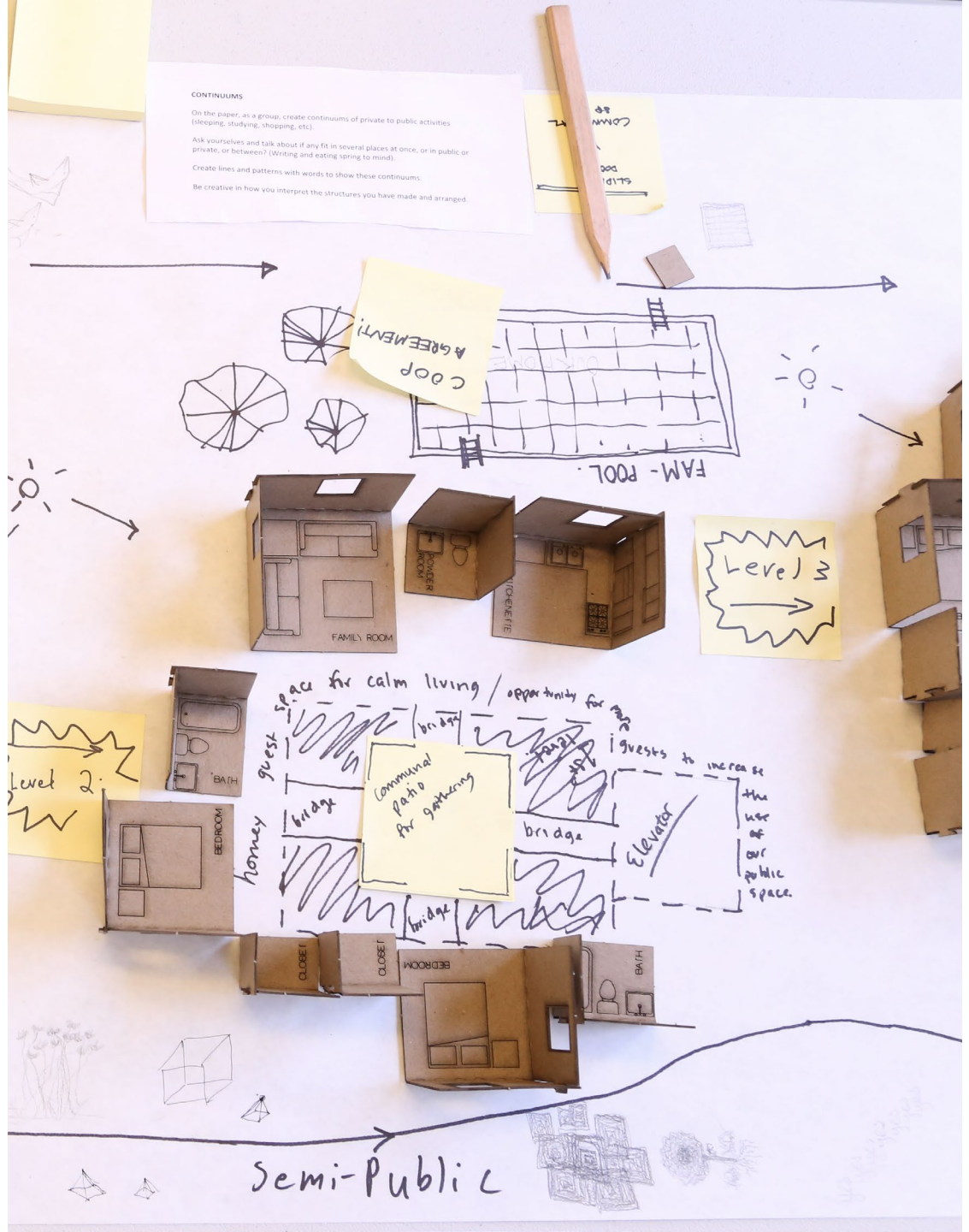
Level 2

Level 2

Communal Path for gathering

to increase the use of our public space.

Semi-Public







Connected Communities Kick-Off with Michelle Ortiz, September 2019





Michelle Ortiz and Keyssh Datts at the Mural Opening, October 2019





Michelle Ortiz Mural Opening, October 2019





Design-Build Workshop with Tiny WPA , November 2019



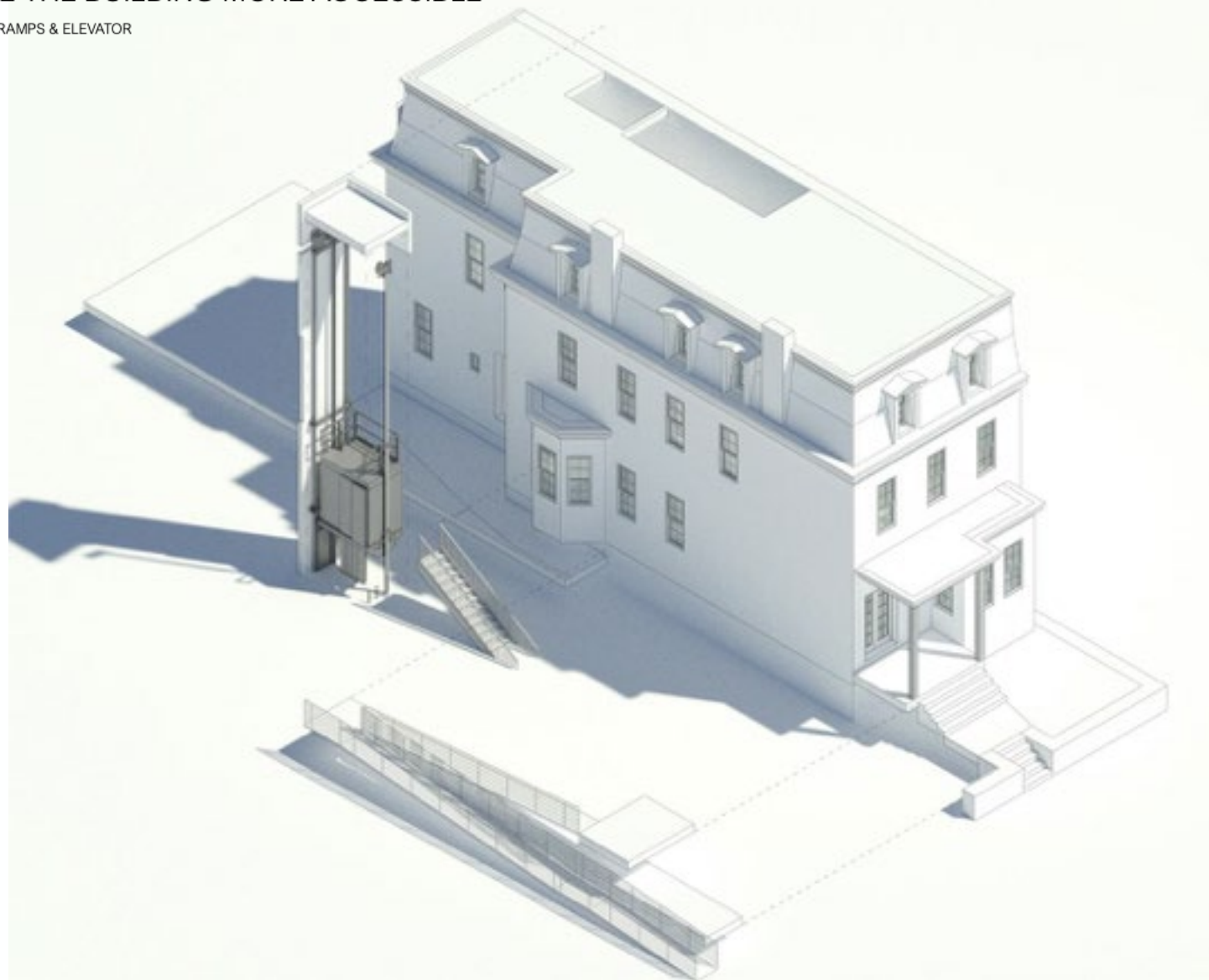


Collaboration with Mural Arts + People's Paper Co-op, July 2019



MAKE THE BUILDING MORE ACCESSIBLE

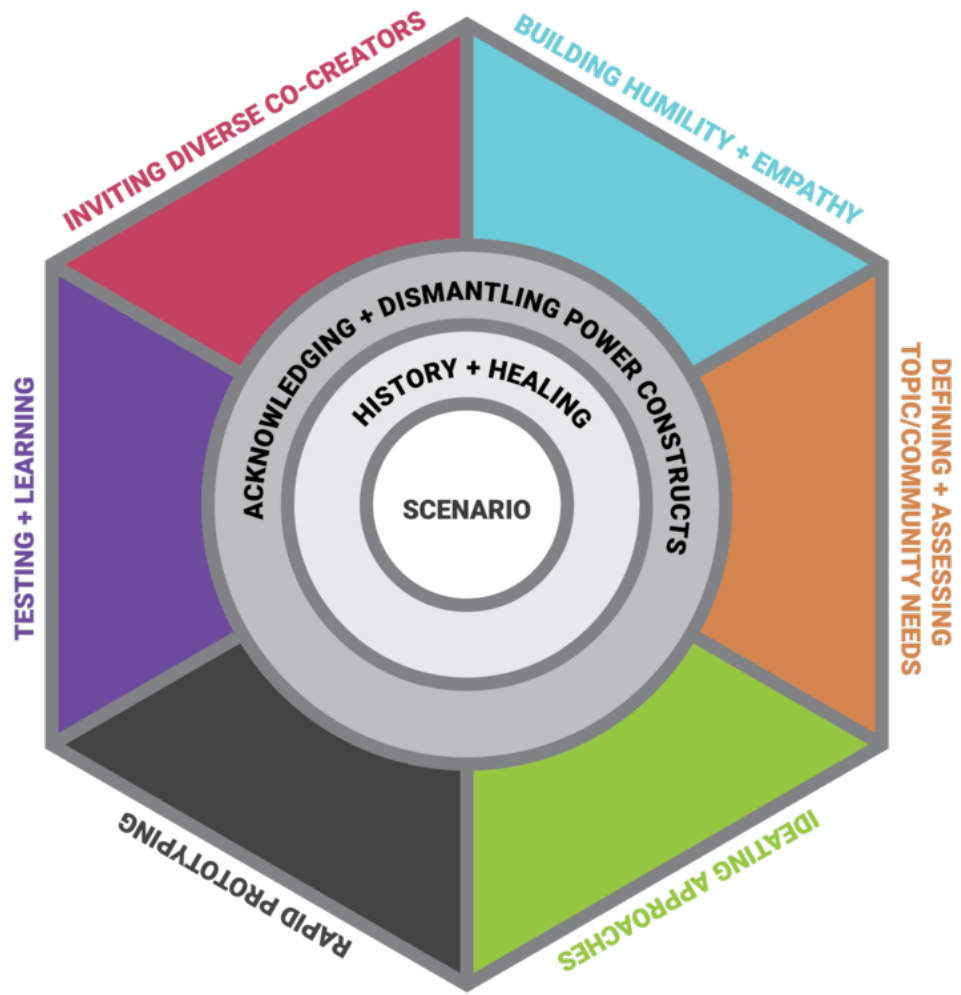
ADDING RAMPS & ELEVATOR





Workshop

Tools for Equity Centered
Community Design



**EQUITY-CENTERED
COMMUNITY DESIGN**



Step 1

Make a list:

Who are your
overlapping communities?



Step 2

Look at your list.

What do you understand
about them?

Their needs and experiences?



Step 3

What would you like to know?

What questions do you still have?



Share in small groups.



Step 4

Planning.

What are my next steps?
What is my commitment?



Share as one group.

Everyone take a turn reading
(please).

Questions?



WRITERS ROOM

writersroomdrexel.org



@writersroomdrexel



@WritersRoomDU



Writers Room Drexel



creativereactionlab.com