



Justice for All

February 27, 2015

Rutgers University at Camden

PHENNND



Staff

Hillary Kane
Director

Liz Shriver
K-16 Partnerships Coordinator

Eden Kainer
VISTA Program Manager

Daisy Villa
Next Steps Program Coordinator

Margaret McLaughlin
AmeriCorps VISTA Leader

PHENND Steering Committee

Dr. Ira Harkavy
Director, Netter Center for
Community Partnerships
University of Pennsylvania

Dr. Marcine Pickron-Davis
Chief Community Engagement and Diversity Officer
Widener University

Dr. Virginia Johnson
Director, Faith-Justice Institute
Saint Joseph's University

Dr. Joy Charlton
Lang Center for Civic and Social Responsibility
Swarthmore College

Nell Anderson
Co-Director, Civic Engagement Office
Bryn Mawr College

Jennifer Johnson Kebea
Interim Director, Lindy Center for Civic Engagement
Drexel University

Nyeema Watson
Acting Associate Chancellor for Civic Engagement and Strategic Planning
Rutgers University at Camden

About PHENND

The Philadelphia Higher Education Network for Neighborhood Development (PHENND) is a consortium of over 25 colleges and universities in the greater Philadelphia area. PHENND works to **build the capacity** of its member institutions to develop mutually beneficial, sustained, and democratic community-based service-learning partnerships. The consortium actively seeks to **revitalize local communities and schools** and **foster civic responsibility** among the region's colleges and universities.

Higher educational institutions can function as permanent anchors and partners for community improvement. Moreover it is deeply in their interests to do so; their futures are intertwined with that of their neighborhoods. PHENND provides a vehicle for coordinating and, where appropriate, combining the efforts of higher eds so that they can make a significant contribution to improving the entire Philadelphia region.

Acknowledgements

PHENND would like to thank the following individuals and organizations for helping make this conference a success.

- Nyeema Watson, the Rutgers-Camden Civic Engagement Office, and the entire Rutgers-Camden community;
- Keynote speaker Marsha Levick; and
- All of our many workshop presenters.



Detailed Agenda

8:15 AM Registration & Continental Breakfast (Multi-Purpose Room)

9:00 AM Welcome and Opening (Multi-Purpose Room)

9:20 AM Opening Panel (Multi-Purpose Room)

#BlackLivesMatter: Racial Disparities Across Systems

- Dr. Doreen Loury, Director Pan African Studies, Arcadia University
- Prof. Chad Lassiter, University of Pennsylvania
- Dr. Sandra Simkins, Director and Co-founder of the Children's Justice Clinic at Rutgers School of Law
- Moderator: Dr. James Teufel, Mercyhurst University

10:20 AM Break

10:30 AM Workshop Series I

- Rutgers School of Law – Camden and LEAP Academy Charter School: How a K12 School- Law School Partnership Engages Students and Families
- Seeking Justice Inside and Outside the Walls
- Promoting access to justice through multidisciplinary academic-community collaborations and medical-legal partnerships
- Serving Students with Criminal Records: How Colleges and Community Partners Can Unlock Potential

12:00 PM Lunch & Keynote Speaker (Multi-Purpose Room)

Marsha Levick, Deputy Director, Juvenile Law Center

1:45 PM Workshop Series II

- School Based Youth Courts: Opportunities for Student Leadership and Civic Action
- Expungement Service Learning Partnerships
- Reflections on Tutoring In Carceral Settings
- Effectively Redesigning Higher Education Access for Marginalized Populations: How Colleges and Communities Organize

3:00 PM Break & Lindy Award Recognition – Multi-Purpose Room

3:30 PM Workshop Series III

- Engaging Elementary School Children in Their Homework: A collaboration of a Police Department, a Housing Authority, and an Institution of Higher Education
- The Impact of Restorative Justice Interventions
- Community Service Directors Affinity Group Meeting: The New PA Criminal Background Check Law

4:45 PM Conference Ends

Keynote Speaker

Marsha Levick, Esq.

Marsha Levick, Deputy Director and Chief Counsel, co-founded Juvenile Law Center in 1975. Throughout her legal career, Levick has been an advocate for children's and women's rights and is a nationally recognized expert in juvenile law. Levick oversees Juvenile Law Center's litigation and appellate docket. She has successfully litigated challenges to unlawful and harmful laws, policies and practices on behalf of children in both the juvenile justice and child welfare systems. Levick also spearheaded Juvenile Law Center's litigation arising out of the Luzerne County, Pennsylvania juvenile court judges' corruption scandal, known as the "kids for cash" scandal, where Juvenile Law Center successfully sought the expungement and vacatur of thousands of juveniles' cases before the Pennsylvania Supreme Court, and is pursuing civil damages for the children and their families in a federal civil rights class action.

Levick has authored or co-authored numerous appellate and amicus briefs in state and federal appeals courts throughout the country, including many before the US Supreme Court, and has argued before both state and federal appellate courts in Pennsylvania and numerous other jurisdictions. Levick co-authored the lead child advocates' amicus briefs in *Roper v. Simmons*, where the U. S. Supreme Court struck the juvenile death penalty under the Eighth Amendment; *Graham v. Florida*, where the U. S. Supreme Court struck life without parole sentences for juveniles convicted of non-homicide offenses under the Eighth Amendment; *J.D.B. v North Carolina*, where the U.S. Supreme Court ruled for the first time that a juvenile's age is relevant to the Miranda custody analysis under the Fifth Amendment; and *Miller v. Alabama*, where the Supreme Court banned mandatory sentences of life without parole for juveniles convicted of homicide offenses. Levick is a frequent speaker and lecturer on children's rights nationwide, and has also co-authored numerous scholarly articles on children's rights, including zero tolerance policies, girls in the juvenile justice system, juveniles' right to effective counsel; the emergence of a juvenile Eighth Amendment standard; and the emergence of a 'reasonable juvenile' standard in criminal law.



Workshop Descriptions

Workshop Series I: 10:30-11:45 AM

Rutgers School of Law – Camden and LEAP Academy Charter School: How a K12 School- Law School Partnership Engages Students and Families

Executive Meeting Room

(Dr. Gloria Bonilla-Santiago, Distinguished Professor of Public Policy and Administration; Jill Friedman, Associate Dean for Pro Bono, School of Law; Robert Ransom, School of Law; and Matthew Closter, Public Affairs, Rutgers University-Camden)

Faculty and students of the Rutgers School of Law - Camden and LEAP Academy Charter School developed a partnership to provide a variety of services to students and families, including legal assistance with immigration, divorce, and child abuse and neglect, and law-related education on constitutional rights and responsibilities and financial literacy. This partnership reflected the critical style of civic engagement that a law school can perform to strengthen surrounding communities. Visit with the leaders of the initiative to discuss the challenges and opportunities of developing the concept from inception to implementation, with lessons learned and suggestions for future collaborations.

Seeking Justice Inside and Outside the Walls

South ABC Conference Room

(Dr. Anne Dalke, Dr. Jody Cohen, Hayley Burke, Sasha De La Cruz, Sara Gladwin, and Michaela Olson, Bryn Mawr College; Romi Laskin and Silvi Shameti, Haverford College)

Drawing on the Thursday night tutoring sessions and Friday afternoon book group we offer at Riverside Correctional Facility (a women's prison in Philadelphia), we will describe our attempts to "create justice" rather than subvert it, with a focus on the potentially innovative and transgressive implications of our talking, reading, writing and making art together inside the walls. We will address the aims, pedagogies, and obstacles we face in implementing these programs; the risks of our insufficiently addressing, or inadvertently reifying, lines of power; the conflicts of working within a system of which we are also critical. We will name the opportunities we see for reinvention, both temporally within institutional contexts, and with the "critical hope" of engendering a fuller justice both inside and outside the walls. We will invite participants to think creatively with us about how to do this work.

Workshop Descriptions

Workshop Series I: 10:30-11:45 AM

Promoting access to justice through multidisciplinary academic-community collaborations and medical-legal partnerships

West ABC Conference Room

(Dr. James Teufel, Associate Director, Mercyhurst Institute for Public Health, Mercyhurst University and Shannon Mace Heller, JD, MPH, Director, Policy and Planning, Baltimore City Health Department)

The challenges faced by low-income communities require comprehensive approaches addressing multifaceted needs. Academic institutions are key partners to improve communities by increasing access to justice and addressing inequities. Programs based on the medical-legal partnership (MLP) model trains multidisciplinary students to work collaboratively to address social, economic, legal and political harms in order to improve individual and community health. The Health, Education and Legal Assistance Project: A Medical-Legal Partnership in Chester, Pennsylvania is a collaboration between Widener University School of Law and Crozer-Keystone Health System. Through its clinic, students (law, public health, nursing) participate in two experiential courses focused on addressing issues of disability law and poverty law. In addition to the HELP: MLP project,

Mercyhurst University has also offered the first course in the United States at the undergraduate level. Students have gained classroom knowledge on legal care's link to health and community experience working with health and social service providers. Since 2010, over 100 students have participated in Widener or Mercyhurst MLP coursework.

Serving Students with Criminal Records: How Colleges and Community Partners Can Unlock Potential

Raptor Roost

(Tara Timberman, Reentry Support Project Founder and Coordinator, Community College of Philadelphia)

During this presentation, participants will learn how higher education institutions across the country are currently serving students with criminal records, and how Community College of Philadelphia (CCP) is transforming this landscape through the innovative work of its Reentry Support Project, an initiative of the College's Fox Rothschild Center for Law and Society.

Workshop Descriptions

Workshop Series II – 1:45-3:00 PM

School Based Youth Courts: Opportunities for Student Leadership and Civic Action

Executive Meeting Room

(Keith Bailey, Director of Violence Prevention Programs, Physicians for Social Responsibility-Philadelphia)

Youth courts are structured to provide positive alternative sanctions for first-time offenders by providing a peer-driven sentencing mechanism that allows young people to take responsibility, to be held accountable, and to make restitution. Youth courts employ youth, giving them the responsibility of acting as jurors, judges and attorneys, as they handle real-life cases involving their peers. The goal of youth court is to use positive peer pressure to ensure that young people who have committed minor offenses pay back the community and receive the help they need to avoid further involvement in the justice system. Youth courts hear a range of low-level offenses, with many handling cases that would otherwise wind up in Truancy Court or result in out-of-school suspensions, both consequences that afford little opportunity for learning or growth.

Expungement Service Learning Partnerships

South ABC Conference Room

(Elizabeth Canapary, Professor, Community College of Philadelphia)

This workshop will explore service learning partnerships using a recently-hosted expungement clinic as a model. The workshop will address CLS and the College's expungement clinic held on October 18, 2014 at the College's Northwest Regional Center in North Philadelphia. The clinic served 102 members of the community, of which 67 were accepted for purposes of further investigation. The clinic partnered with other organizations, including BenePhilly, to provide additional resources while the clients were waiting for their intake interview. Community College students received training from CLS in advance of the clinic and participated, along with Temple Law Students, in doing the initial intake interviews under the supervision of CLS staff. The expungement clinic gave Community College students, many of whom were raised and live in Philadelphia, the opportunity to have an impact within their own neighborhood and community. Significantly, this service learning model allows community members to serve other community members, thereby enabling the community to serve itself.

Workshop Descriptions

Workshop Series II – 1:45-3:00 PM

Reflections on Tutoring In Carceral Settings

West ABC Conference Room

(Sandra Knuth and Grace Li, Regional Field Managers, The Petey Greene Program)

Exchanges of learning, a sense of community, boundaries, power imbalances -- all of these are key to the dynamics of a school classroom. What do these look like in a classroom inside a prison, jail, or detention center? In this workshop, participants will reflect on their own educational and service experiences and relate them to service work in academic departments of correctional facilities. In the face of constraints and challenges, how can we foster an environment conducive to creation, participatory learning, and collective empowerment?

lasting and effective partnerships. This session will include strategies and participant involvement to development meaningful outcomes of the workshop. Participants will engage in partnership development and feedback for future opportunities for community based partnerships for the tri-state area.

Effectively Redesigning Higher Education Access for Marginalized Populations: How Colleges and Communities Organize

Raptor Roost

(Geraldine Atkins, Director of Sojourner Center of Excellence in Social Work and Courtney Plotts, eCourseLogic)

This workshop is designed to highlight innovative cost effective strategies and partnerships for communities and colleges to engage, teach, and graduate marginalized populations. This session presents valuable models of inter-agency interactions that involve meaningful long



Workshop Descriptions

Workshop Series III – 3:30-4:45 PM

Engaging Elementary School Children in Their Homework: A collaboration of a Police Department, a Housing Authority, and an Institution of Higher Education

[Executive Meeting Room](#)

(Dr. Merydawilda Colon, Executive Director, Stockton Center for Community Engagement; Dr. Stephanie Medvetz, Criminal Justice; and Paul Campos, Stockton University and Officer Kiyia Harris, Atlantic City Police Department)

This presentation discusses strategies for citywide collaboration in creating a homework completion program in an urban setting. The presentation also highlights the importance of assessment in selecting collaboration strategies to elicit partners' support.

Objectives:

- Discuss the benefits of citywide collaboration in the creation of an after school program.
- Discuss practical strategies used to elicit collaboration and to secure a memorandum of understanding among the police department, the housing authority, and an institution of higher education.
- Discuss the common benefits and challenges in partnering with community organizations.

The Impact of Restorative Justice Interventions

[South ABC Conference Room](#)

(Dr. Sydney Howe-Barksdale, Director, Public Interest Resource Center, School of Law, Widener University)

This presentation and discussion will introduce participants to the Youth Courts Program, the Expungement Program and the Re-Entry Program, as models of restorative justice collaborations. Attendees will learn about how leveraging inter-institutional resources led to the creation of these programs to bring to bear a shared mission of second chances, especially for adjudicated youth. Workshop participants will also learn about the benefits and challenges of building and sustaining reciprocal inter-institutional-community partnerships.

Community Service Directors Affinity Group Meeting

[West ABC Conference Room](#)

Meet with peers who manage community service and service-learning efforts at Delaware Valley Institutions of Higher Education. The discussion today will focus on the change to Pennsylvania law regarding criminal background checks for staff and volunteers working with children.

Biographies of Panelists

Dr. Doreen Loury **Arcadia University**

Dr. Doreen Loury is currently the creator and director of the Pan African Studies Program at Arcadia University in Glenside, Pennsylvania. Dr. Loury is also an Assistant Professor in the Department of Sociology/Anthropology/Criminal Justice at Arcadia. She is the 2010 recipient of the prestigious Lindback Foundation Award for Distinguished Teaching and is the first African American to receive the award at Arcadia University. She is a recognized expert in the areas of race, class and gender equity, culture and media, multicultural and pluralism educational competencies and organizational research and evaluation. She is the past co-director for the Sankofa 21st Century Community Learning Center Grant which received \$2.4 in funding and the former Director of the Sankofa GEAR UP Project. Dr. Loury is the Founder/Executive Director of the nationally recognized Black Male Development Symposium. This inter-generational symposium (the only one of its kind for Black Males) for the past nine years has been held annually on Arcadia University's campus and has offered workshops and speakers to over 6000 students, parent, educators, community leaders and practitioners in the Tri-State area and beyond. For her work, with the symposium and the community at large, she was honored with the 2012 Charles Henry Chapman Award, given by the Alpha Phi Alpha Fraternity's Zeta Omicron Lambda Chapter and recognized by the Montgomery County Black Women's Educational Alliance as a Montgomery County Trailblazer and received their Education Award for 2013.

Chad Lassiter **University of Pennsylvania**

Chad Dion Lassiter is a nationally recognized expert in the fields of American race relations and violence prevention among African American males. He has worked with resilient and vulnerable families, youth, and communities as they experience normal developmental transitions in challenging environments. Chad Dion Lassiter's research interest attempts to contribute to a more informed analysis of the diverse ways that adolescents and families, especially people of color cope with socioeconomic challenges and institutional racism.

Mr. Lassiter is one of the co-founders and current president of the Black Men at Penn School of Social Work, Inc. at the University of Pennsylvania School of Social Policy and Practice. The group seeks to recruit black males into the profession of social work as well as providing anti racism and violence prevention trainings to urban and suburban schools around the country. He is an appointee of the Mayor to the Board of Trustees for the Community College of Philadelphia and the Philadelphia Prison System and provides diversity training for penal systems throughout the United States of America.

He has worked on race, peace and poverty related issues in Africa, Israel and Haiti. He is called upon often to provide commentary to various media outlets around the world and lectures widely. Presently, he is an Adjunct Professor at West Chester University and the University of Pennsylvania.

Biographies of Key Speakers

Sandra Simkins **Rutgers University-Camden**

Professor Simkins, is the Director and Co-founder of the Children's Justice Clinic at Rutgers School of Law. She is currently the Due Process Monitor for the settlement agreement between the Department of Justice and the Juvenile court of Shelby County, Tennessee. In 2012 she received the Robert E. Shepard Jr. award for excellence in Juvenile Defense. Her book, *When Kids Get Arrested, What Every Adult Should Know*, was released in 2009. In 2008 she was selected by the MacArthur Foundation in to participate in the Models for Change (JIDAN). Areas of expertise include post disposition representation, conditions of confinement and solitary.

Prior to joining the Rutgers faculty in 2006, she spent 15 years working in criminal and juvenile defense. She served as assistant chief of the Juvenile Unit at the Defender Association of Philadelphia, supervising and training a staff of 40, including 23 lawyers, to represent children in the juvenile justice system. Professor Simkins also was involved in wide range of national and statewide policy reform for children.

Dr. James Teufel **Mercyhurst University**

James Teufel, MPH, PhD, is an Assistant Professor of Public Health and Associate Director of the Institute for Public Health. Dr. Teufel has professional experience in the areas of public health, medical-legal partnerships, healthcare, psychology, and aging. He has been employed by community-based organiza-

tions, research institutes, and corporations. Prior to Mercyhurst, he held the position of National Health and Evaluation Director within a national non-profit organization. His current focal areas include social determinants of health, access to justice, program evaluation, and health promotion theory.

Lindy Award for Excellence in K-16 Partnerships

About the Award

The Philip B. Lindy Award for Excellence in K-16 Partnerships honors collaborations between institutions of higher education and K-12 schools. The award recognizes the challenging and important work of the partner organizations and seeks to lift up inspiring, creative, and cutting edge programming.

This year, PHENND will announce the recipient of the Lindy Award today at its Annual Conference. A call for nominations was issued earlier this year and ten applications were received. The applications all represented high quality partnerships and it was extremely difficult to select a recipient. The recipient will receive an award of \$1,000 that they can use to strengthen their partnership and will also be featured in the next edition of PHENND's K-16 Partnerships Newsletter. Many of the runners up will also be featured in the newsletter in the coming months.

Given Phil's commitment to education (both K-12 and university-level) as well as collaboration and partnership, this award is a fitting tribute to his passion and dedication.

About Phil Lindy

Phil Lindy was a philanthropist and entrepreneur whose generosity touched dozens of organizations in the Greater Philadelphia area. In 2010, Lindy funded the creation of the K-16 Partnerships Network at PHENND, which brings together faculty, staff, students, and educators to share, learn, and promote collaboration between K-12 and higher education.

Lindy had a long career as property manager, investor and contractor in the local construction industry. He was a partner with Lindy Communities, a fourth-generation family-run firm that has managed residential properties since the 1930s. Lindy and his late wife, Annabel, expanded the company throughout the Philadelphia area; his sons, Frank and Alan, currently operate the company, which is involved with new construction, student housing, condominiums and full-service senior lifestyle housing. They manage more than 28 communities and 4,000 apartment homes throughout Philadelphia, Bucks and Montgomery counties. Lindy is a 1952 graduate of the Wharton School at the University of Pennsylvania. He received a Doctor of Business Administration degree, honoris causa, from Drexel University in 2010.

Social Media

Follow us on twitter and Facebook!

www.facebook.com/PHENND

@PHENNDUpdates

Use #justiceforall and #PHENND2015 to tweet about the conference

And join us for our first Twitter Chat about the PHENND Conference hosted by Generocity!



Friday, March 6, 2015 at 12 PM

Join in for a conversation on Twitter hosted by Generocity.org (news source for social impact in Philadelphia) and PHENND about the PHENND Conference, #justiceforall, as well as how education and academics can intersect with community involvement. Follow @generocity on Twitter for the questions and use #PHENND2015 to follow along with the chat!

Social Impact

Today's food was catered by Cathedral Kitchen.

The mission of the Cathedral Kitchen is to provide essential life services that support the health and well being of those in the Camden community and, in doing so, to affirm each person's humanity and dignity while guiding them towards self sufficiency.

Cathedral Kitchen serves meals six days a week to impoverished residents of Camden. They also run a Culinary Arts Training Program to help residents acquire marketable job skills, and provide supportive services and case management to their dinner guests.

And they also cater! After hearing many rave reviews about their food, they decided to take advantage of the years of culinary experience that our chefs share and offer catering for off-site events.

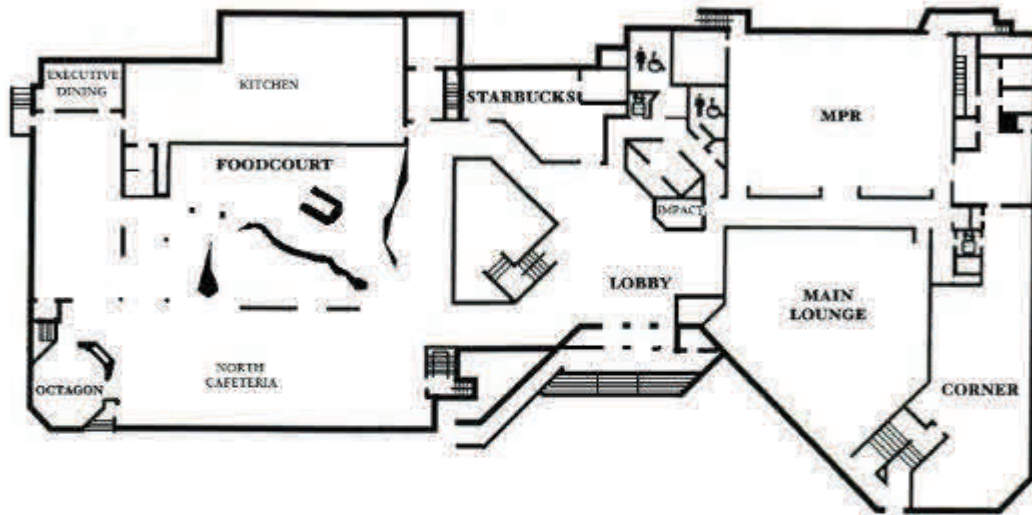
Learn more at: <http://cathedralkitchen.org/>

Floor Plan

Rutgers University Camden Campus Center

Lay of the Land

MAIN LEVEL



LOWER LEVEL



