



#PHLed 101

Rachel Howe, Temple University GEAR UP Coordinator
Caitlin Fritz, K-16 Manager, PHENND

GOALS

1. PHILADELPHIA IS A LARGE COMPLICATED SCHOOL SYSTEM - WHAT'S IMPORTANT TO KNOW AS A GEAR UP COACH?
2. UNDERSTAND SOME OF THE CHALLENGES THAT IMPACT PHILADELPHIA SCHOOLS.
3. EXPLORE THE STRENGTHS OF PHILADELPHIA SCHOOLS - HOW CAN WE SUPPORT CREATING POSITIVE AND TRANSFORMATIONAL LEARNING COMMUNITIES?



School District of Philadelphia by the numbers....

Student demographics

- 134,241 students
- 84% free/reduced lunch

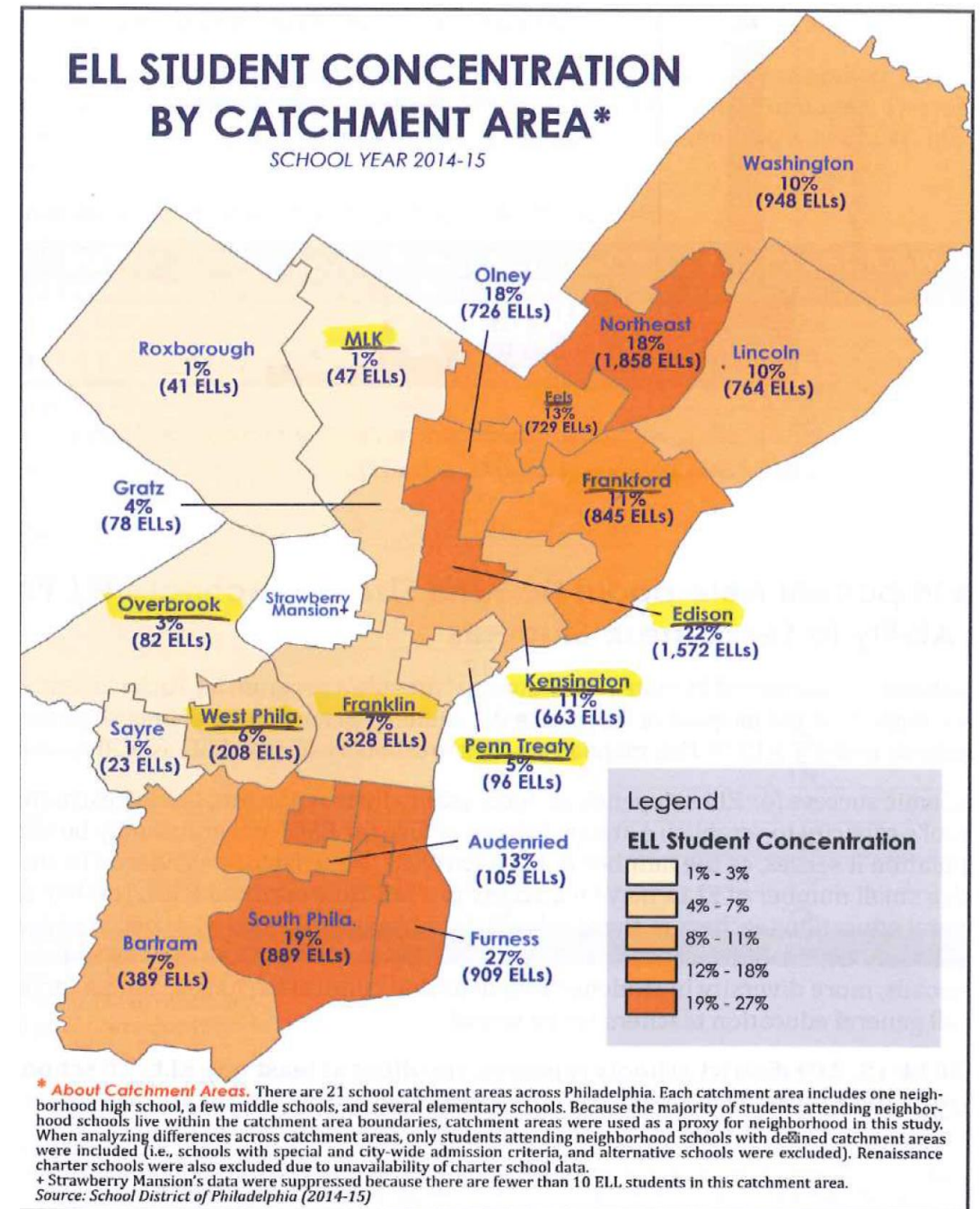


School district teacher count, enrollment, and demographic data is from the 2014-2015 school year sourced from the National Center for Education Statistics. Due to data issues, teacher count for districts in six states (HI, MT, NE, OH, UT, and WI) is from 2013-2014.

A multicultural district

LANGUAGE (in order of 2014-15 population size)	2014-15 NUMBER OF SPEAKERS	% OF ALL ELLs DISTRICT-WIDE (n=12,129)
Spanish	6,260	52%
Chinese (Mandarin)	736	6%
Arabic	697	6%
English	463	4%
Vietnamese	443	4%
Khmer	384	3%
Creoles and Pidgins (English and French-based)	359	3%
Russian	254	2%
French	221	2%
Portuguese	218	2%
Nepali	211	2%
Chinese (Cantonese)	188	2%
Pashto	134	1%
Malayalam	124	1%
Ukrainian	111	1%
Albanian	105	1%
Bengali	104	1%
Other ⁵ (82 languages)	1,124	9%
Total Languages Spoken in Philadelphia Public Schools		107*

* This number is approximate and does not separate out all unique creoles and pidgins. Percentages may not add up to 100% due to rounding.
Source: School District of Philadelphia (2014-2015).



TYPES OF SCHOOLS

Neighborhood

- Anyone living within the catchment area can attend
- **Edison High School**

City-wide Admission

- Open to any student throughout the city; usually has a special focus
- **High School of the Future**

Special Admission (Magnet)

- Requires top grades, attendance, and behavior records. May also require artistic portfolio
- Masterman, Creative and Performing Arts (CAPA)

Special Admit programs

- Special program within an existing neighborhood or citywide high school, often technical
- **Benjamin Franklin Center for Advanced Manufacturing and Engineering Technology**

Charter Schools

- Privately run but publicly funded schools. Admission by lottery system
- KIPP, Mastery

Private

- Parochial
- Non-religious/Independent



Networks

Neighborhood Network - schools group by geography

Turnaround Network - Low performing schools targeted for improvement plans.

The selected schools have been low performing for multiple years and rank among the lowest performing schools.

GEAR UP Schools in the Turnaround Network:

King

West Philadelphia

Edison



FAIR FUNDING

PA relies heavily on local property taxes to fund school districts

Wealthier towns with more homeowners and more expensive real estate have more funds for schools.

Spending per student in 2000

- Philadelphia: \$6,969 per year
- Jenkintown: \$12,076 per year
- Radnor: \$13,288 per year
- Upper Merion: \$13,139 per year

70% of Philadelphia's students are at or near the poverty line

Philadelphia School District receives 48.8% of its annual revenue from the state. In 2015 that totaled \$984,000,794

Old funding formula relied on political will, and often cronyism

New funding formula – money follows the individual student and gives more money to students with additional needs (ESL, IEP). It also gives more money to districts that have difficulty raising enough money on their own. This applies only to funding increases

School Closings

The SRC voted to close 23 schools in 2013. Buildings often sold to private owners or made into public-private partnerships

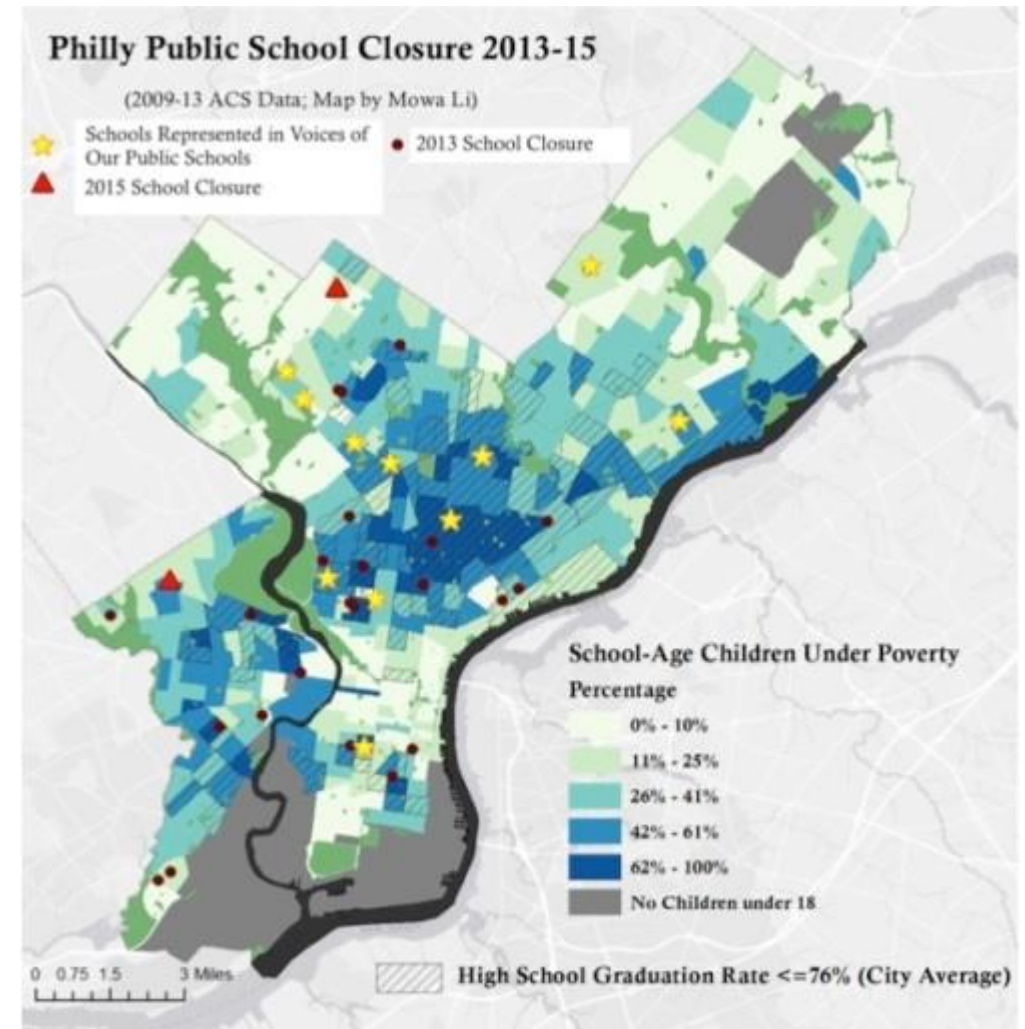
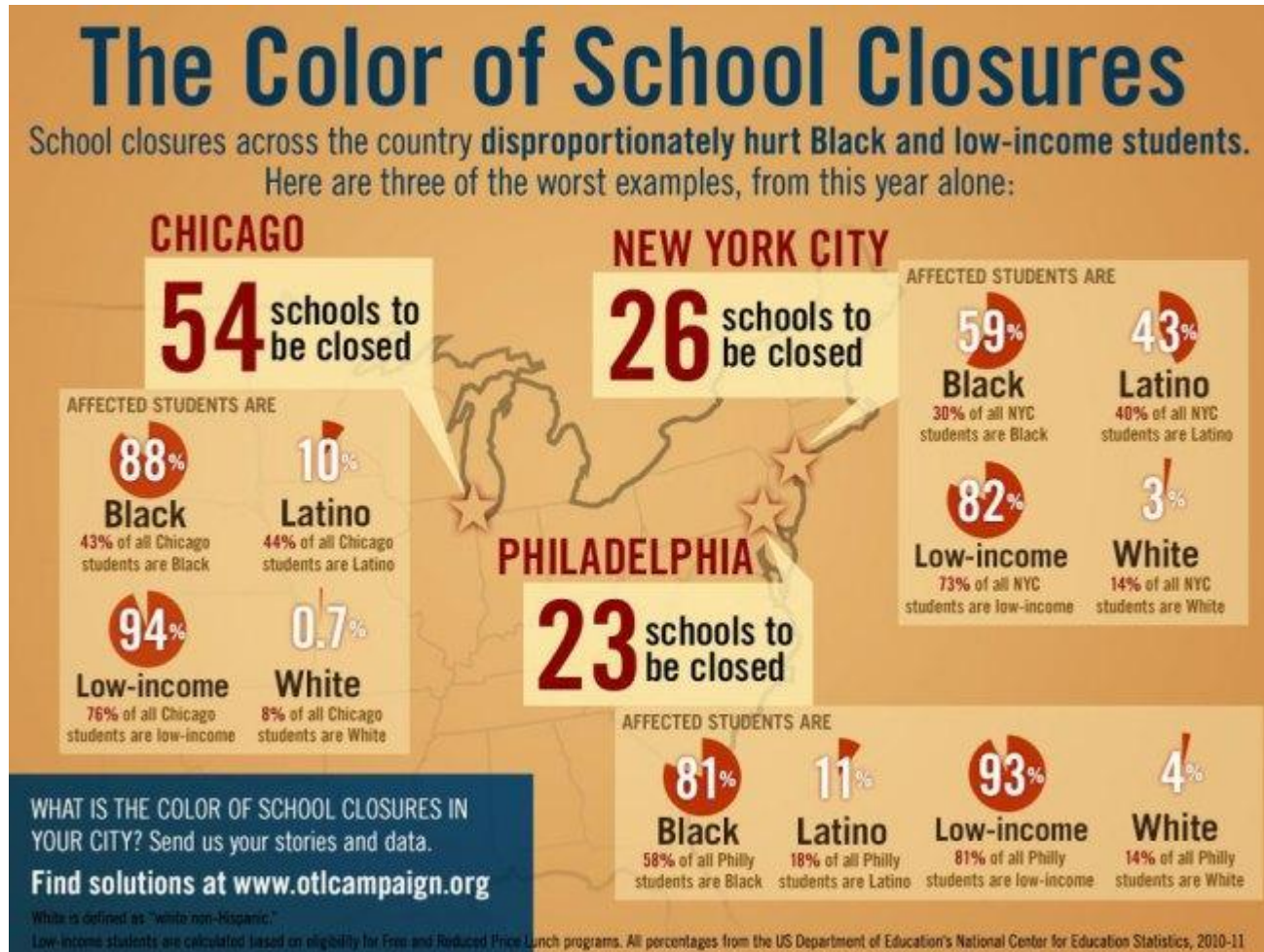
Planned School Closings – 3 schools each year over the next 5 years

Research for Action shows study - drawing funds from district schools to fund charter schools does have a negative economic effect for those students who remain at district schools.

Although many critics see the fair funding formula as a big improvement, it only applies to new money, so many districts still are not receiving the cash that the state says they are entitled to.



School Closure Inequities



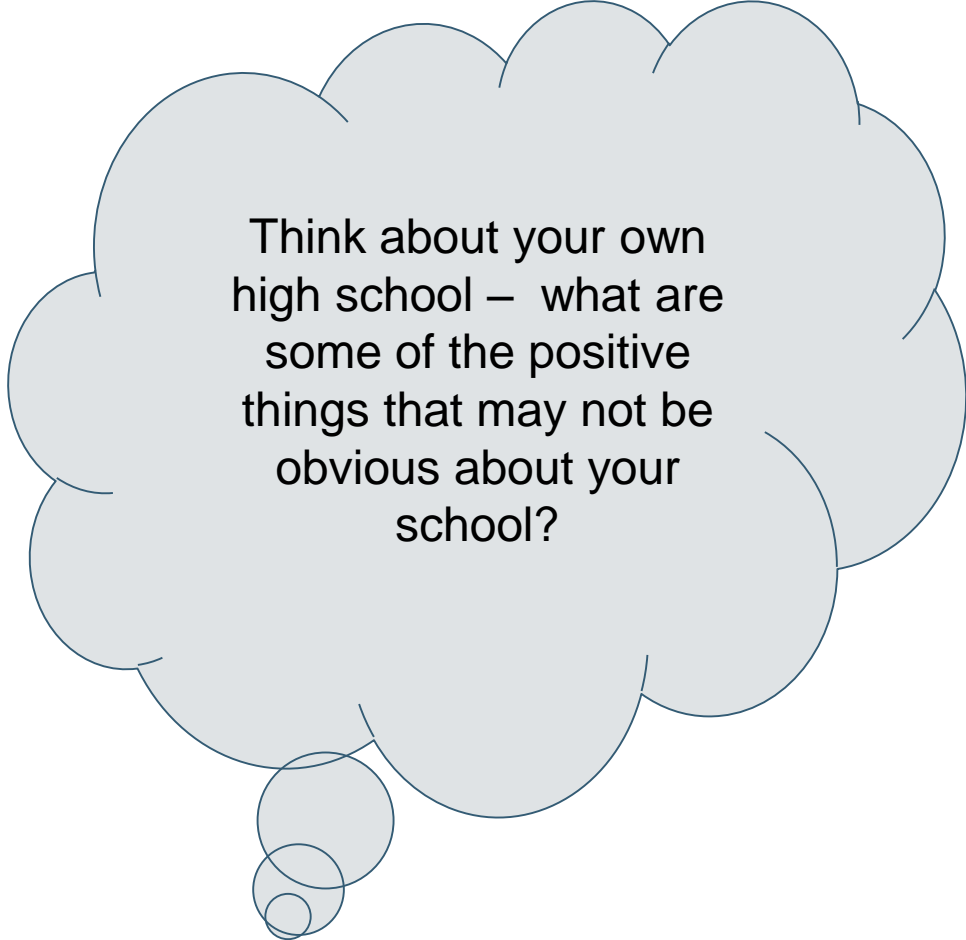
What can you do?

Avoid **deficit thinking**

An **asset approach** relies on a core belief that good things exist in communities and that those things can be highlighted and encouraged

- An asset mapping allows us to look at information about the strengths and resources of a community and can help uncover solutions.

<https://www.youtube.com/watch?v=z3mQeAhOcW8>



Think about your own high school – what are some of the positive things that may not be obvious about your school?

Case Studies

In small groups read through a school-based case study

What are the strengths of this school community?

How can your university work to build off of these strengths to continue to partner in creating positive school communities?



What can you do?

Stay informed

- Follow #PHLed on Twitter
- Read the Philadelphia School Notebook

Support youth in their leadership and organizing

- Philadelphia Student Union, Youth United for Change

Attend and Participate

- TAG: Teacher Action Group
- Caucus of WE

PHENND GEAR UP Resource Page



What did you learn?

add to our chart!



SOURCES

<http://www.phillymag.com/citifed/2016/01/14/school-reform-commission-pew-report/>

<https://www.scribd.com/doc/295507546/Governing-Urban-Schools-in-the-Future-What-s-Facing-Philadelphia-and-Pennsylvania>

https://en.wikipedia.org/wiki/School_District_of_Philadelphia

<file:///C:/TempSave/Media-FAQsv2.pdf>

phillystudentunion.org

https://en.wikipedia.org/wiki/School_District_of_Philadelphia

<http://thenotebook.org/>

- <http://thenotebook.org/high-schools>

<http://www.philly.com/philly/opinion/commentary/school-reform-commission-Philadelphia.html>

<http://www.phillymag.com/citifed/2016/06/02/pennsylvania-funding-formula/>

<file:///C:/TempSave/PA-Ed-Funding-Formula-Fact-Sheet-5.pdf>

<https://www.researchforaction.org/publications/fiscal-impact-charter-school-expansion-calculations-six-pennsylvania-school-districts/>