



THE SCHOOL DISTRICT OF  
PHILADELPHIA

# Getting Involved *at Your Child's School*

The Office of Family and Community Engagement (FACE)





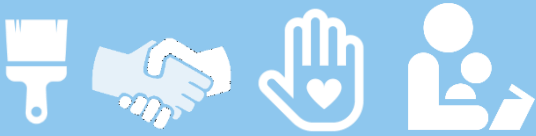
Become a  
Volunteer!



Where do I start...?



Join a  
Group!



Want work with other people?

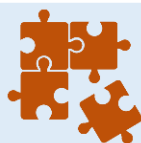


*Join a Group!*





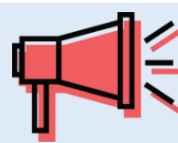
## Join a Group!



### School Advisory Council (SAC)

Sit at the table with the principal, staff, community members, & other families to help make decisions about the school.

[www.philasd.org/sac](http://www.philasd.org/sac)



### Home & School Association (HSA)

Participate in fundraisers + event planning; learn how to support your child.

<http://www.philahsc.org/>



### “Friends Of” Group

Work with members of your community to provide resources and raise funds for your neighborhood school.

[http://www.philacrosstown.org/  
blank](http://www.philacrosstown.org/blank)



Join a Group!



## School Advisory Council (SAC)

**HOW TO JOIN:** Apply online at [www.philasd.org/sac](http://www.philasd.org/sac)

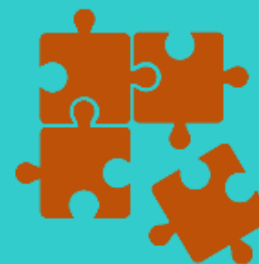
### WHAT YOU'LL DO:

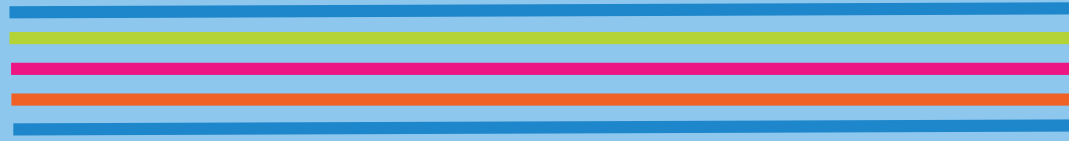
- Discuss how to improve the school
- Plan projects that help improve academic achievement, climate & culture, and family engagement at the school

### YOU SHOULD JOIN IF:

- You enjoy looking at school data
- You want to help make decisions at the school
- You want to build stronger relationships with teachers and the principal

**QUESTIONS:** Contact [sac@philasd.org](mailto:sac@philasd.org) or 215-400-4180, option #3





[https://www.youtube.com/watch?v=g\\_b-dNV92QA](https://www.youtube.com/watch?v=g_b-dNV92QA)



Join a Group!



## Home & School Association (HSA)

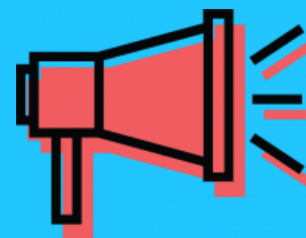
**HOW TO JOIN:** Sign up online at <http://www.philahsc.org/>

### WHAT YOU'LL DO:

- Hold fundraisers for the school
- Plan school events

### YOU SHOULD JOIN IF:

- You want to meet other parents
- You enjoy fundraising and event planning



**QUESTIONS:** Contact Shakeeda Gaines, Interim President,  
[motheroftheyear3@hotmail.com](mailto:motheroftheyear3@hotmail.com)



Join a Group!



## “Friends Of” Group

**HOW TO JOIN:** Go to <http://www.philacrosstown.org/fone-schools-directory> to find out if your school has a “Friends Of” Group

### WHAT YOU’LL DO:

- Host large and/or on-going fundraisers for the school
- Write grants to support the school



### YOU SHOULD JOIN IF:

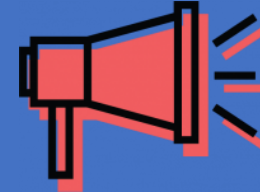
- You want to meet new parents who do not yet have children in the school
- You enjoy grant writing, pledge drives, and fundraising

**QUESTIONS:** Jeff Hornstein, Friends of Neighborhood Education Steering Committee, [jeff.hornstein@gmail.com](mailto:jeff.hornstein@gmail.com)





## SAC vs. HSA



### School Advisory Council

Includes ALL stakeholders

No membership dues

Purpose: talk about issues at the school

- Student achievement
- Climate & culture
- Family engagement

**CANNOT** fundraise

FACE Office / District program

### Home & School Association

Parents ONLY (staff can join, but cannot vote)

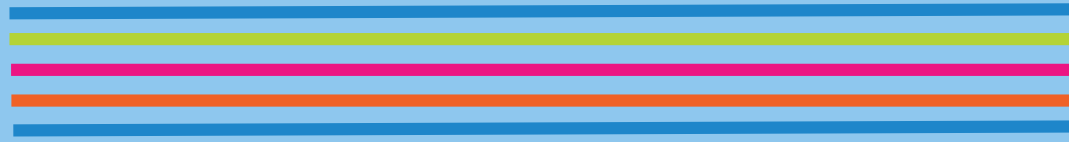
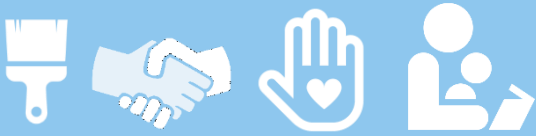
Pay membership dues

Purpose: fundraising & event planning

- 501c3 non-profit
- Overseen by Home & School Council
- Separate from District

Can fundraise

**NOT** a FACE Office / District program



Can't commit to a group?



***Become a Volunteer!***





## Become a Volunteer!



### INSTRUCTIONAL

Support student learning under the guidance of teachers:

- Tutoring
- Mentoring
- Reading Support



### ADMINISTRATIVE

Help with tasks outside of the classroom:

- Office help
- Making copies and stuffing folders
- Sitting at the school's welcome desk



### SPECIAL EVENTS

Support school-wide and special events:

- Book Fairs
- Career Days
- Field trips
- Community Volunteer Days



Become a Volunteer!



## HOW DO I BECOME A VOLUNTEER?



*New for 2017-2018  
School Year!!*

1. Fill out a **Volunteer Application** –  
[www.philasd.org/face/volunteer](http://www.philasd.org/face/volunteer)
2. Complete a **Volunteer Packet**



Become a Volunteer!



## **THE VOLUNTEER PACKET**

- Volunteer Code of Conduct Agreement
- Child Abuse History Clearance
- PA State Criminal Background Check
- FBI Background Check OR Signed Volunteer Affirmation Sheet
- Certificate of Volunteer Orientation Completion



Become a Volunteer!



## **VOLUNTEER CODE OF CONDUCT**

**Print, read, and sign.**

Available online:

[www.philasd.org/face/volunteer](http://www.philasd.org/face/volunteer)





Become a Volunteer!



## CLEARANCES



**Child Abuse History  
Clearance – FREE**



**PA State Criminal  
Background Check – FREE**



If you **HAVE** lived in PA  
for the past 10 years...

If you have **NOT** lived in  
PA for the past 10 years...

**Signed Volunteer  
Affirmation Sheet – FREE**

**FBI Background  
Check – \$24.25**



Become a Volunteer!



## **VOLUNTEER ORIENTATION**

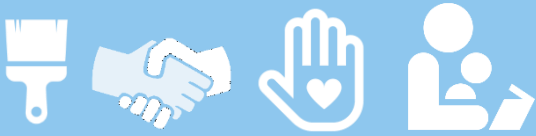
**Starting in 2017-2018 School Year, ALL volunteers must complete a Volunteer Orientation within 45 days of their volunteer start date.**

Attend Orientation **in-person** at  
440 N. Broad OR at school sites

OR

Take Orientation **online** (webinar):  
[www.philasd.org/face/volunteer](http://www.philasd.org/face/volunteer)





# QUESTIONS?

**Shannon O'Brien**

Program Specialist

Office of Family and Community Engagement

[sobrien2@philasd.org](mailto:sobrien2@philasd.org) // 215-400-6218

